

Measure Back Length (With 1/2 inch Hem Allowed) Edge

FOR LETTING OUT THE

32	34	36	38	40
35	36	38	40	42
45	45 1/2	46	46	47
43	44	45	45	46

BUTTERICK PATT
Including DELTOR
45 CENTS

VIEW A

LADIES' SLIP-OVER DRESS with Circular Side.

VIEW B

size 17 bust 35 inch

new Butterick pattern including New Deltor

price 50 cents

Frock for Misses and Women.

35	36	38	40	42	44	46	48
46 1/2	46 1/2	46 1/2	46 1/2	46 1/2	46 1/2	46 1/2	46 1/2
1 3/4	1 3/4	1 3/4	1 3/4	1 3/4	1 3/4	1 3/4	1 3/4

BUTTERICK PATTERN
Including DELTOR
45 CENTS



Model A Era Fashion Pattern Catalog

5593

SIZE	BUST	HIP	INS.
			Entire back length of frock from shoulder

Instructions printed in French and English

65 Cents

2/-

Instructions imprimées en français et en anglais

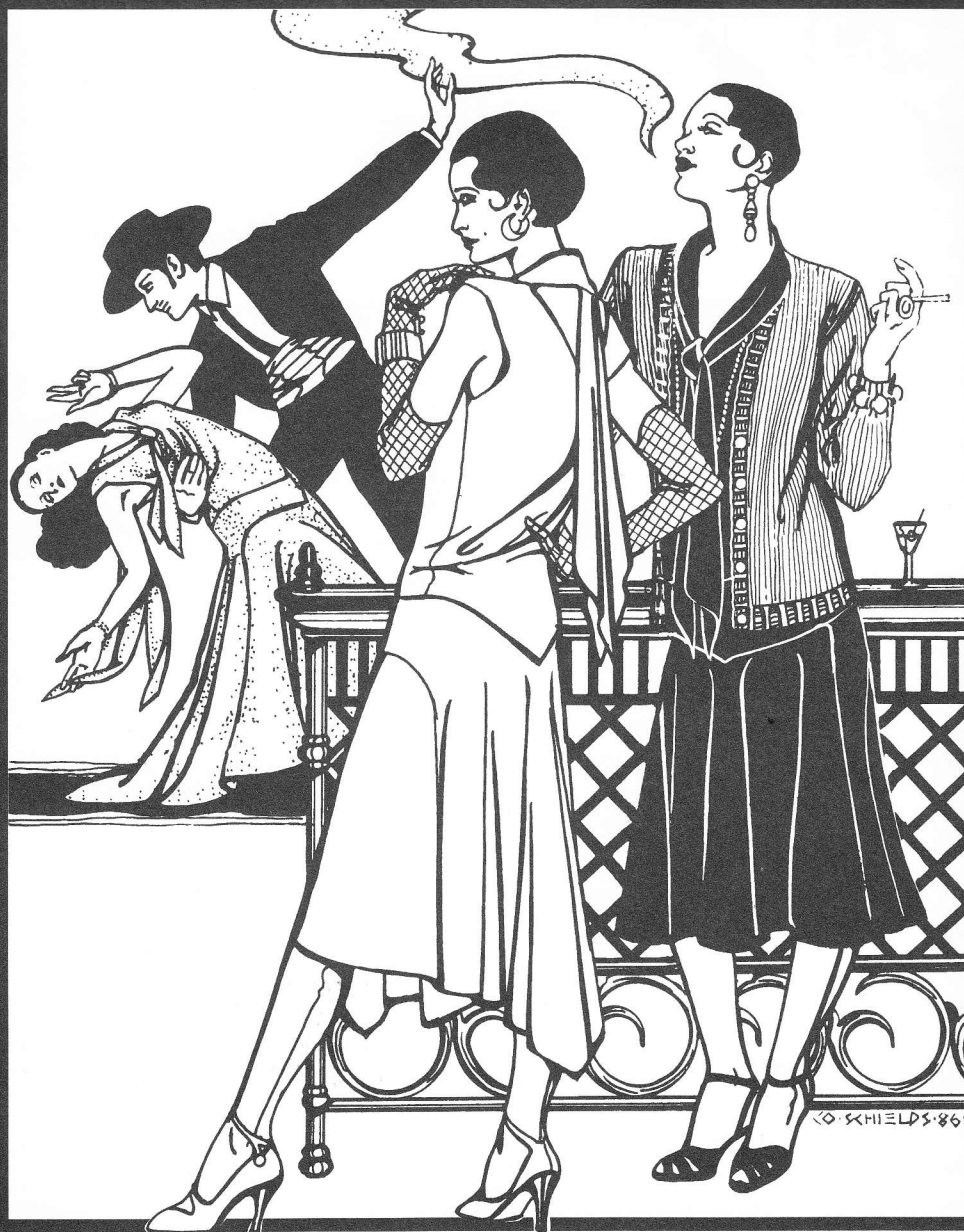


McCALL PRINTING PATTERNS

Ladies' & Misses' Dress

Published by
MODEL A FORD CLUB OF AMERICA

FOLKWEAR®

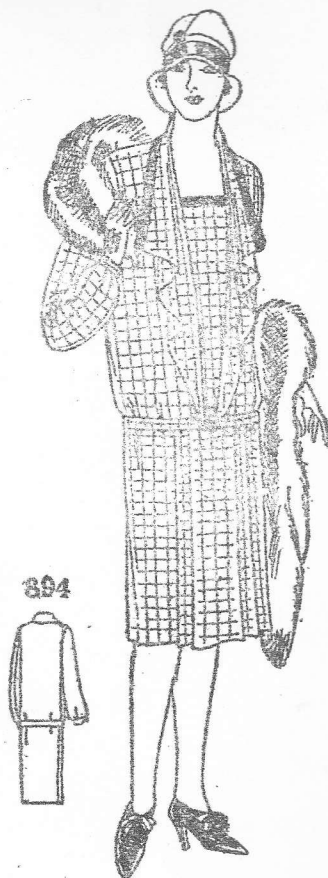


TANGO DRESS

Day or Evening Dress to Sew & Cardigan Sweater to Knit

894

45c



Slip-On Dress, Having Square Neck with Attached Collar that Is
Cut in One with Jabot. Front of Dress Is in Two Sections,
Lower Section Pressed in Plaits. Sleeves Are Gathered
Into Narrow Bands at Wrists. Removable Belt.
For Ladies.

Sizes 36, 38, 40, 42, 44, 46 inches bust.

894

40